

■ ■ ■ ■ ■
YOUNGSHIN
PRECISION

CHASSIS / TRANSMISSION / POWERTRAIN / BRAKE



CEO MESSAGE



“We have a dream to become a Global Leader thru our Passion and Challenge”

As one of the global leading manufacturers & exporters for automotive OE products, we YOUNGSHIN will continuously devote to fulfill the highest customer satisfaction thru “customer value creation”. Also, we will do our utmost to develop & supply the world best products for our customers based on our own expert knowledge & advanced technology which we have created. In order to strengthen our core competency and to prepare our prosperous future, we YOUNGSHIN will be aggressively expanding our investment to the R&D and the quality management area. Also, we will be focusing on recruiting a qualified global human resources and training them to become a specialist in their job works as one team.

CEO *Sang-woo Lee*

HISTORY

The Take-Off Stage 2000s

- 2020.01 - Awarded with Supplier Quality Excellence from GM (5 times from 2009)
- 2019.10 - Established regional office For North America, U.S.A
- 2015.07 - Contracted with MITEC Automotive AG for Technical Assistance Agreement (Pendulum type Engine oil pump)
- 2015.06 - Established new R&D Center Building
- 2009.12 - Established overseas factory “Youngshin Automotive India PVT., Ltd.” in Chennai, India
- 2007.08 - Established overseas factory “Suzhou Youngshin Precision Co., Ltd.” in Suzhou, China
- 2005.10 - Established overseas factory “Beijing Youngshin Faco Precision Co., Ltd.” in Beijing, China
- 2005.05 - Established “Hwasan” factory in Gyeongju, Korea

Period Of Growth 1990s

- 1995.08 - Selected as “Best Quality Management Top 100 Enterprises” by Korean Government in 1994 & 1995
- 1991.01 - Foundation of R&D Center

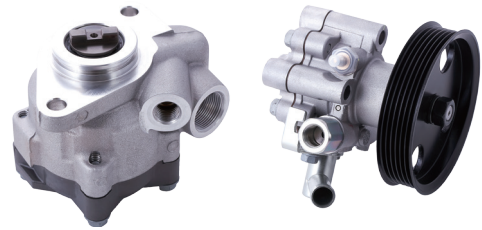
Establishment 1980s

- 1987.06 - Contracted with Hitachi Unisia Automotive., Ltd. for Technical Assistance Agreement
- 1987.02 - Foundation of Youngshin Precision Co., Ltd.

PRODUCT OVERVIEW



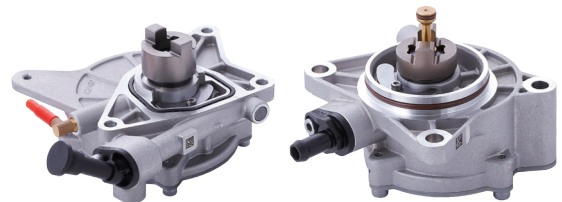
Variable Displacement P/S Pump



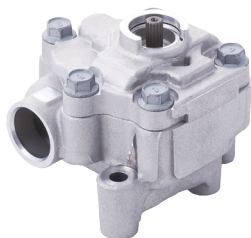
Power Steering Oil Pump



C-EPS / MDPS Parts



Mechanical Vacuum Pump



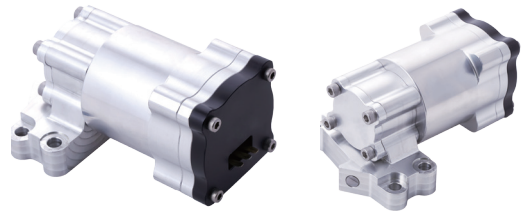
CVT Oil Pump



Engine Oil Pump



Electric Vacuum Pump



Electric Oil Pump



Electro Hydraulic Actuator



Electric Water Pump



ICE



Steering system



Mechanical



Brake system



EV, HEV, FCEV



Power Train



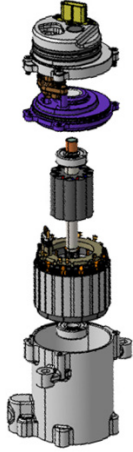
Electrical



HVAC

ELECTRONICS

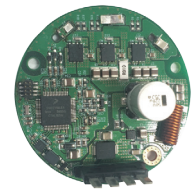
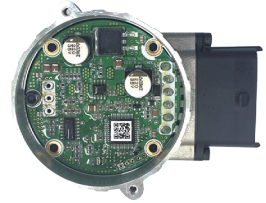
IMAGE



HIGH VOLTAGE



MOTOR



CONTROLLER

SPECIFICATION

MOTOR	SPEC	
CAPACITY	HIGH VOLTAGE	LOW VOLTAGE
WATT	1.25KW	100W-400W
VOLTAGE	250V	9-16V
SLOT	AS CUSTOMER REQUIREMENT	
POLE		
TYPE	BLDC/PMSM	BLDC/PMSM

CONTROLLER	SPEC	
WATT	1.25KW	100-400W
VOLTAGE	250V	9-16V
TEMPORATURE	-30-125℃	-30-125℃
MOTOR CONTROL	BLDC/PMSM	BLDC/PMSM
COMMUNICATION	LIN/CAN	LIN/CAN
TYPE	Sensor or less	Sensor or less

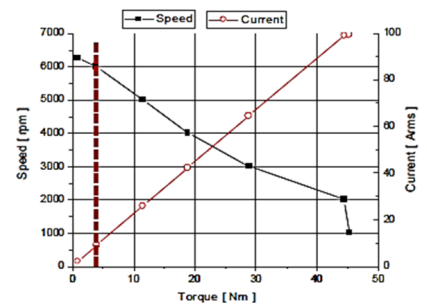
CERTIFICATION



ISO26262 - ASIL A



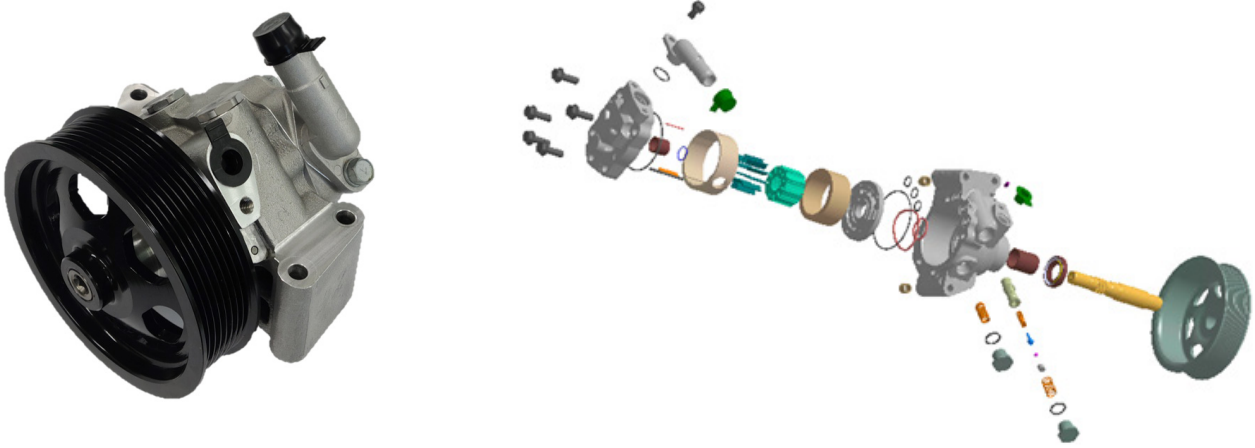
ASPICE CL2(IN PROGRESS)



MOTOR TNI GRAPH

VARIABLE DISPLACEMENT PUMP

IMAGE



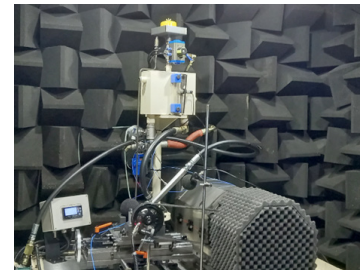
SPECIFICATION

Temp.	Displacement	Controlled Flow	Pulley Diameter	Relief Pressure
-35-120 °C (Peak 125 °C)	15 CC/rev	3.3 GPM(12.5 lpm)	138.1 mm	125 +/- 4 Bar

TEST REPORT

ALL VALIDATION TEST : PASSED

No	Test Name	Condition	Result
1	Basic performance	N-Q, P-Q, Relief, Torque	Pass
2	NVH Test	Noise, Pulsation, Pressure - Ripple	Pass
3	Vibration Test	23 °C x 200Hz x 440G x 10 ⁶ cycle	Pass
4	Salt , Water Spray	Salt, Mud, Water High pressure spray	Pass
5	Durability Test	80-135 °C 1-130bar x 369,000cycle	Pass
6	Relief Abuse Test	80 °C relief 3s x 5000rpm x 2,500cycle	Pass
7	Cold start Durability	-15--40 °C x 2hrs x cold chamber	Pass



NVH NOISE LEVEL TEST

RESEARCH AND DEVELOPMENT PRODUCTS

Electric compressor (Scroll Type)



Description:

Electric compressor applied in air conditioning systems for pleasant cabin same as internal combustion vehicles. it is independently driven by an electric motor with scroll type but also enabling the cabin to be cooled even during engine off mode.

Main features

01. Stability of noise and vibrations
02. High durability
03. Operating independently without the engine

Application:

Electric and Hybrid vehicles



Electro Hydraulic Power Steering (E-HPS)



Description:

E-HPS is a key item among the power steering system parts for EV, HEV and operates independently by an electric motor that is operating only during steering mode.

Main features

01. Stability of noise and vibrations
02. High durability
03. Efficient energy consumption
04. Operating independently without the engine

Application:

EV, HEV, FCEV (Commercial Vehicles)



Strain Wave Gearing



Description:

SWG is one of the type of reducer and a technology that applies the elastic dynamics of metal and has not only sophisticated controls but also a light weight and simple structure.

Main features

01. No Backlash
02. High gear ratios
03. High torque capability

Application:

Robotics, Smart Factory, aerospace, Automotive parts etc.

COMPANY LOCATION

Korea



Global Location



CUSTOMERS

Domestic



Overseas



www.ys-kr.com

Seoul Sales Office : 5F, J&J B/D, 20, Tehran-ro 63-gil, Gangnam Gu, Seoul City, 06160, Korea

HQ & 1st Factory : 156, Moaoya-gil, Cheonbuk Myeon, Gyeongju City, Gyeongsangbuk Do, 38039, Korea

USA Office : 2855 Coolidge Highway Suite 108 Troy, MI 48084

Tel. +82-2-6714-6510 Fax. +82-2-568-0775

Tel. +82-54-745-4491 Fax. +82-54-745-4490

Tel. +1 248-792-2508